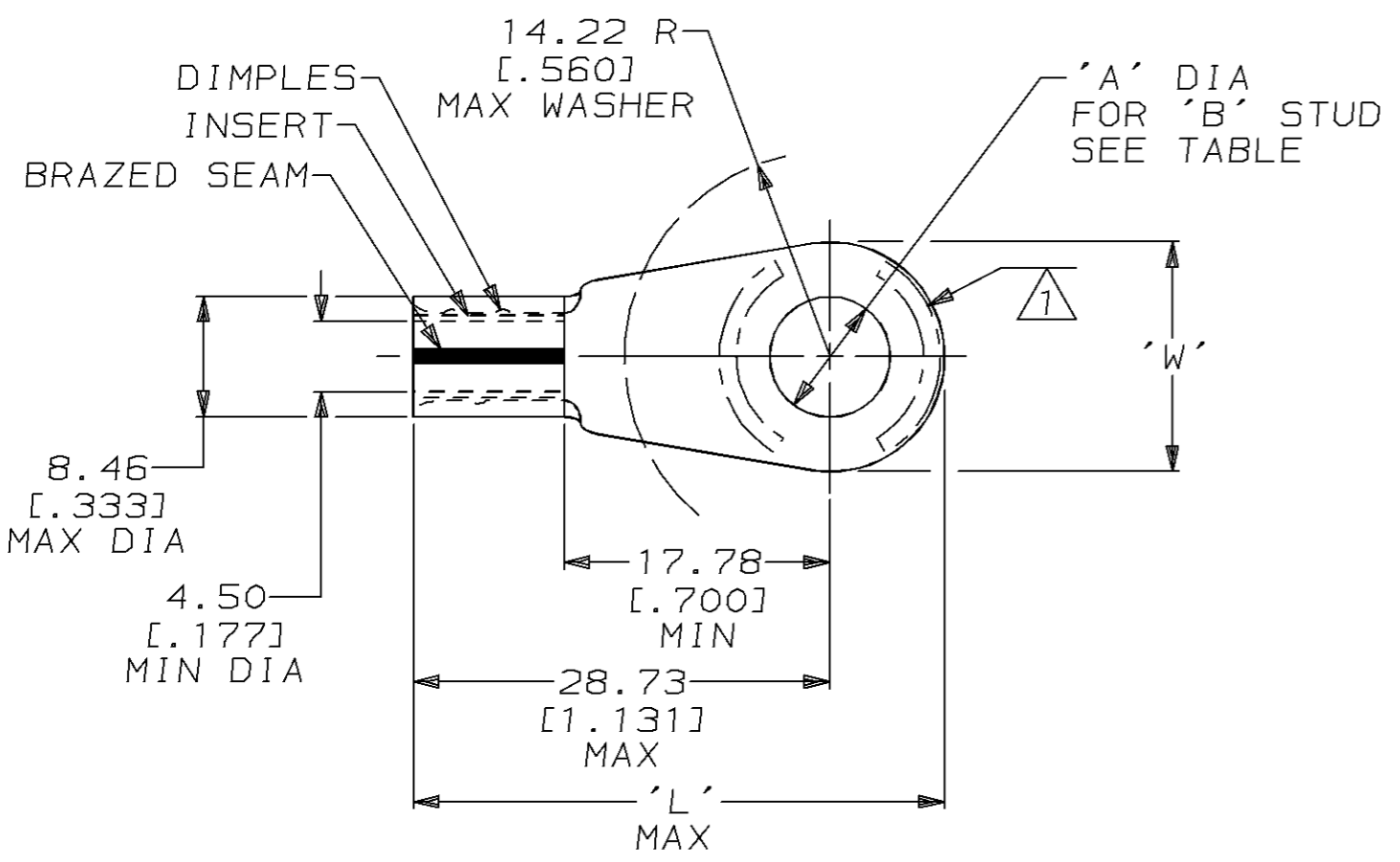


THIS DRAWING IS UNPUBLISHED. RELEASED FOR PUBLICATION, 19 .  
 © COPYRIGHT 19 BY AMP INCORPORATED. ALL RIGHTS RESERVED.

LOC	DIST	REVISIONS			
P	LTR	DESCRIPTION	DATE	DWN	APVD
G	86	K	REVISED PER 0720-0925-96	09SEP96	DKS CHK



1 STAMP 8 AL90CU APPROX AS SHOWN  
 2 MATERIAL THK: 1.14 ± 0.08 [.045 ± .003]

OBSOLETE	3.68 ± 0.08 [.145 ± .003]	#6	35.15 [1.384]	12.70 [.500]	BODY: COPPER PER ASTM B-152 TIN PL 0.00254 [.000100] MIN THK PER MIL-T-10727	50720-5
OBSOLETE	11.51 ± 0.13 [.453 ± .005]	7/16	15.88 [.625]	36.73 [1.446]		50720-4
OBSOLETE	9.91 ± 0.13 [.390 ± .005]	3/8	15.88 [.625]	36.73 [1.446]		50720-3
	8.33 ± 0.13 [.328 ± .005]	5/16	15.88 [.625]	36.73 [1.446]	INSERT: BRASS PER MIL-C-50 TIN PL 0.00254 [.000100] MIN THK PER MIL-T-10727	50720-2
	6.73 ± 0.13 [.265 ± .005]	1/4	35.15 [1.384]	12.70 [.500]		50720-1
	5.00 ± 0.08 [.197 ± .003]	#10	35.15 [1.384]	12.70 [.500]		50720
	'A'	'B'	'L'	'W'	MATERIAL & FINISH	AMP PART NUMBER

# AMP INCORPORATED CUSTOMER SERVICE SYSTEMS

FOR ADDITIONAL PRODUCT INFORMATION OR COPIES OF DRAWINGS AND TECHNICAL DOCUMENTS	PRODUCT INFORMATION CENTER 1-800-522-6752	RECOMMENDED OPERATING TEMPERATURE: 170°C MAX
FOR APPLICATION TOOLING INFORMATION	TOOLING ASSISTANCE CENTER 1-800-722-1111	VOLTAGE RATING: NOT APPLICABLE
FOR ORDER ENTRY	1-800-526-5142	WIRE CROSS SECTIONAL AREA RANGE: 6.64-10.53mm <sup>2</sup> [13, 100-20, 800] CIR MILS STRANDED

THIS DRAWING IS A CONTROLLED DOCUMENT FOR AMP INCORPORATED. IT IS SUBJECT TO CHANGE AND THE CONTROLLING ENGINEERING ORGANIZATION SHOULD BE CONTACTED FOR THE LATEST REVISION.

DIMENSIONS: mm [INCHES]	TOLERANCES UNLESS OTHERWISE SPECIFIED:
	0 PLC ±-
	1 PLC ±-
	2 PLC ±0.20 [.008]
	3 PLC ±-
	4 PLC ±-
ANGLES ±-	
MATERIAL SEE TABLE	FINISH SEE TABLE

DWN DK SCHRUM 09SEP96	AMP Incorporated Harrisburg, PA 17105-3608
CHK DM SWARTZ 11SEP96	
APVD JL MECKLEY 11SEP96	
PRODUCT SPEC -	NAME TERMINAL ASSEMBLY, RING TONGUE, STRANDED/SOLID, COPALUM™, WIRE SIZE: 8 AL-CU
APPLICATION SPEC -	SIZE A3
WEIGHT -	CAGE CODE 00779
CUSTOMER DRAWING	DRAWING NO G-50720
	SCALE 2:1
	SHEET 1 OF 1
	REV K